

BEAUTIFUL 4-BEDROOM RIAD NEXT TO EL BADI PALACE

540 000 €

Ref 86883782

Marrakech - Riad 2045 sq ft

VANEAU
Luxury Real Estate



About this property

Vaneau Maroc Real Estate Agency offers for sale this charming riad located just 3 minutes from Place des Ferblantiers and all its shops. This fully renovated riad, with a floor area of 2045 m², comprises on the ground floor a patio, a fully equipped kitchen, a beautiful living room, and a bedroom with an en-suite bathroom. The first floor is dedicated to the sleeping area, with three additional bedrooms, each with its own bathroom. You will also enjoy a magnificent rooftop terrace furnished with a summer kitchen and a lounge area under a pergola. Finally, a rooftop solarium offers breathtaking panoramic views of the city and the Atlas Mountains. This riad represents an excellent rental investment opportunity, while also being perfect as a charming pied-à-terre in Marrakech. Buyer's fee: 3% in addition to the sale price.

Robinson Choual

✉ maroc@vaneau.fr
phone_abbreviation
[+212664905373](tel:+212664905373)

Marrakech Agency
Marrakech - Marrakech

Price : 540 000 €

Surface : 2045 sq ft

Rooms : 6

Bedrooms : 4

Floors : 2

Bathrooms : 4

Shower rooms : 0

Garden : Yes

Terrace : Yes

BEAUTIFUL 4-BEDROOM RIAD NEXT TO EL BADI PALACE

540 000 €

Ref 86883782

Marrakech - Riad 2045 sq ft

VANEAU
Luxury Real Estate



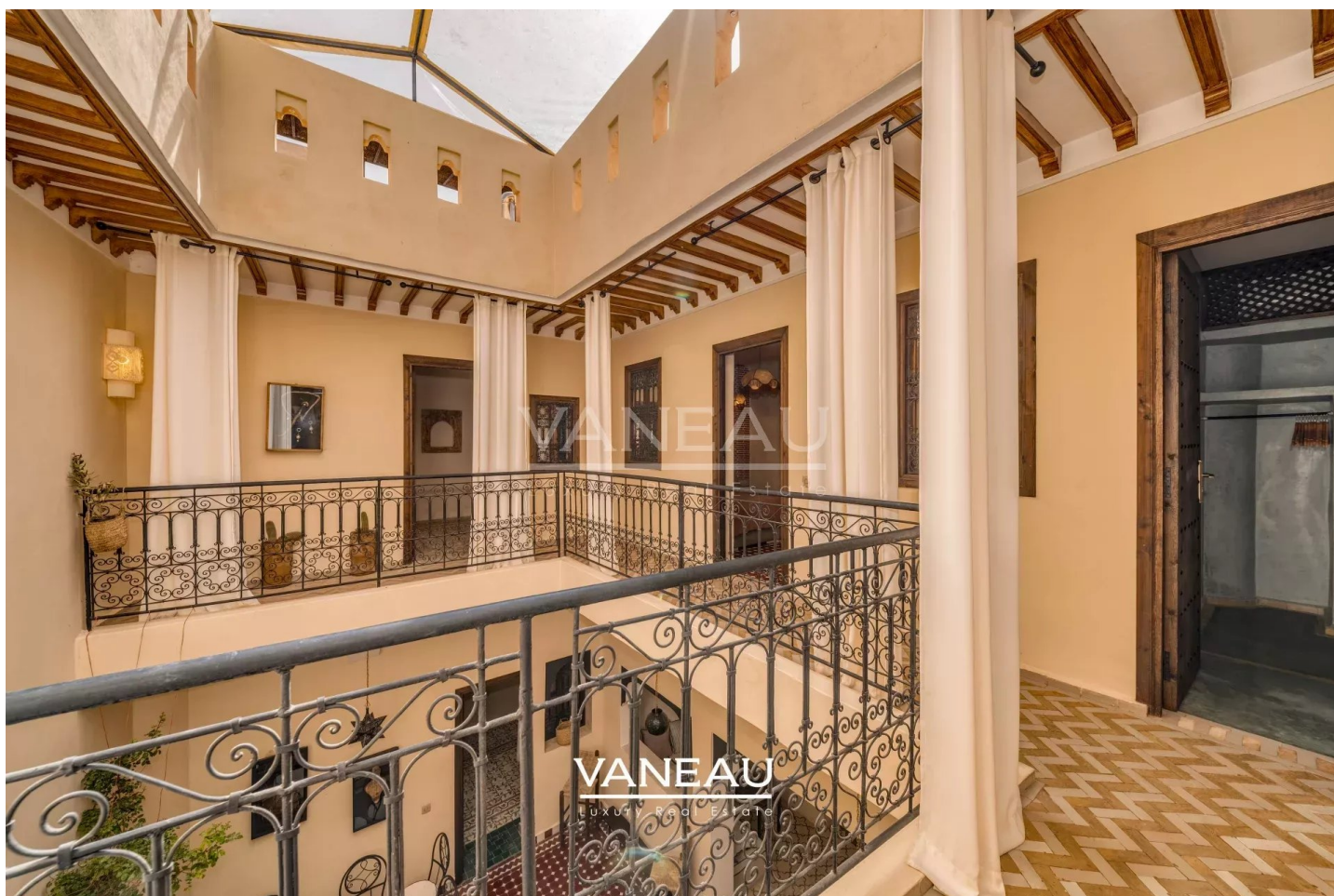
BEAUTIFUL 4-BEDROOM RIAD NEXT TO EL BADI PALACE

540 000 €

Ref 86883782

Marrakech - Riad 2045 sq ft

VANEAU
Luxury Real Estate



VANEAU

Immobilier de prestige depuis
1972

VANEAU LOCATION

Une équipe dédiée à Paris,
Neuilly et Boulogne

VANEAU VIAGER

30 ans d'expérience en vente
viagère

VANEAU

C'EST AUSSI

VANEAU BUREAUX & COMMERCES

+10 000 offres disponibles

VANEAU PATRIMOINE

Dispositifs de défiscalisation,
SCPI, Assurances Vie

VANEAU DIGITAL NEUF

La plate-forme digitale 100%
immobilier neuf

COURTAGE CRÉDITS

Exell Crédit immobiliers
Assurances emprunteurs

GESTION LOCATIVE

GTF, plus de 7 000 lots gérés à
Paris

140 collaborateurs

1200 signatures par an

1000 immeubles par an

2.5 milliards d'actifs gérés