

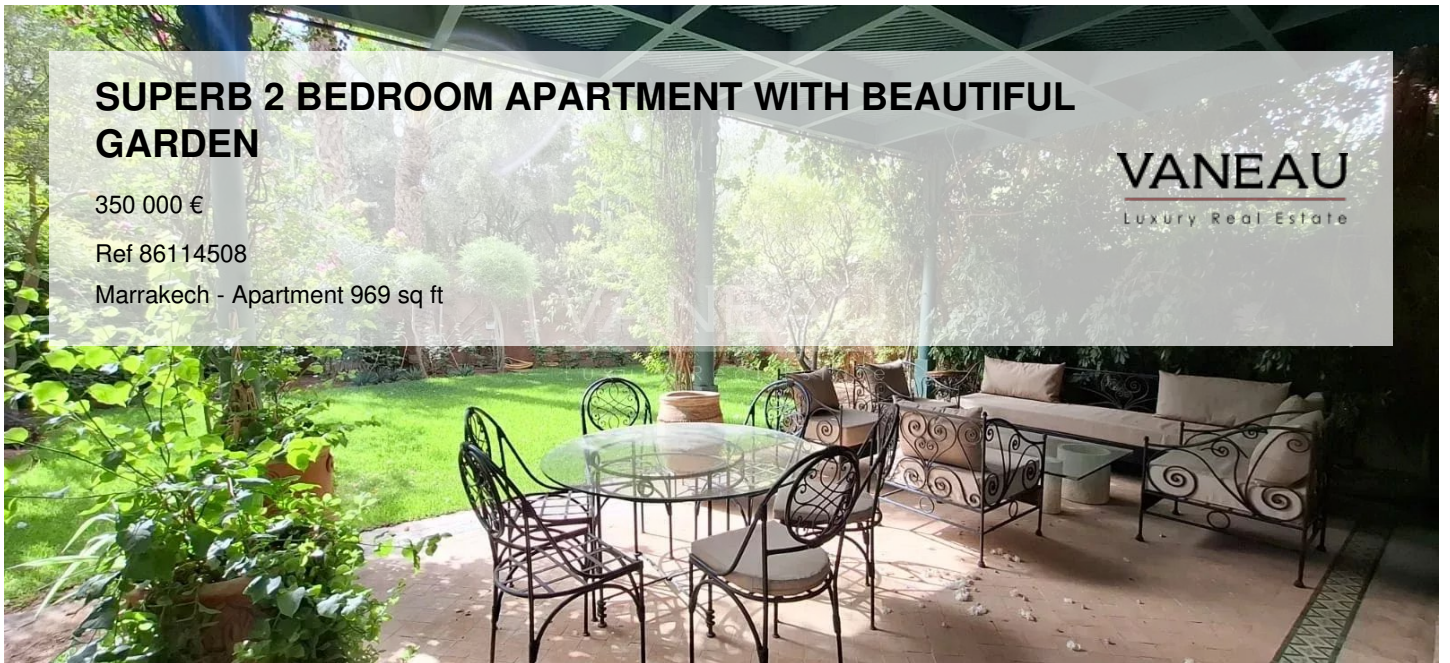
## SUPERB 2 BEDROOM APARTMENT WITH BEAUTIFUL GARDEN

350 000 €

Ref 86114508

Marrakech - Apartment 969 sq ft

**VANEAU**  
Luxury Real Estate



### About this property

Located just 10 minutes from the city center, in a highly sought-after residence, Vaneau Maroc, your luxury real estate agency in Marrakech, presents this stunning two-bedroom apartment with a beautiful garden. The apartment consists of a living room, a dining area, two bedrooms with en-suite bathrooms, and a kitchen opening onto a courtyard with a small pavilion that can be used as a laundry room or even a service room. The garden is beautifully landscaped, and you can install a private pool. The residence is known for its calm and cleanliness. You also have access to the communal pool and gym. If you are looking for a spacious, bright apartment in a high-end residence, contact Vaneau Maroc, your luxury real estate agency in Marrakech, to arrange a viewing.

### Robinson Choual

✉ [maroc@vaneau.fr](mailto:maroc@vaneau.fr)  
phone\_abbreviation  
[+212664905373](tel:+212664905373)

Marrakech Agency  
Marrakech - Marrakech

**Price :** 350 000 €

**Surface :** 969 sq ft

**Rooms :** 5

**Bedrooms :** 2

**Bathrooms :** 2

**Shower rooms :** 0

**Garden :** Yes

**Swimming pool :** Yes

**Caretaker :** Yes

## SUPERB 2 BEDROOM APARTMENT WITH BEAUTIFUL GARDEN

350 000 €

Ref 86114508

Marrakech - Apartment 969 sq ft

**VANEAU**  
Luxury Real Estate





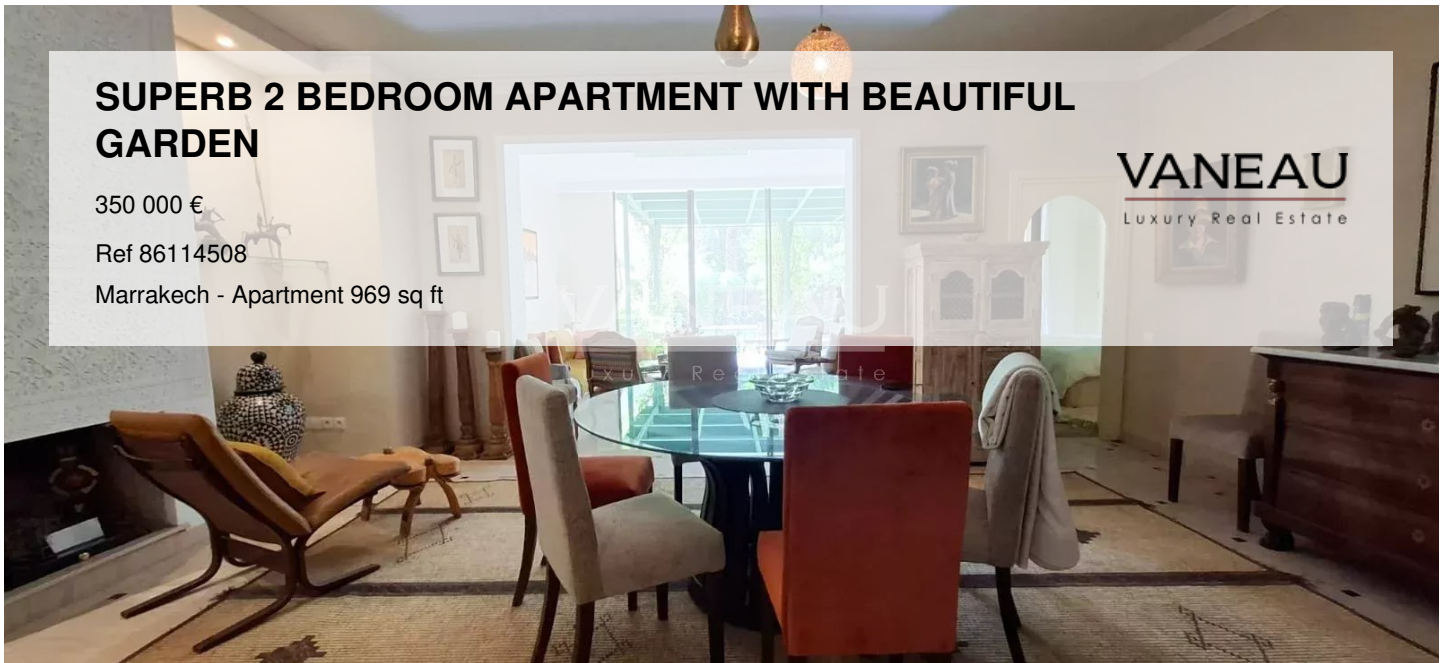
## SUPERB 2 BEDROOM APARTMENT WITH BEAUTIFUL GARDEN

350 000 €

Ref 86114508

Marrakech - Apartment 969 sq ft

**VANEAU**  
Luxury Real Estate



## **VANEAU**

Immobilier de prestige depuis  
1972

### **VANEAU LOCATION**

Une équipe dédiée à Paris,  
Neuilly et Boulogne

### **VANEAU VIAGER**

30 ans d'expérience en vente  
viagère

# **VANEAU**

## **C'EST AUSSI**

### **VANEAU BUREAUX & COMMERCES**

+10 000 offres disponibles

### **VANEAU PATRIMOINE**

Dispositifs de défiscalisation,  
SCPI, Assurances Vie

### **VANEAU DIGITAL NEUF**

La plate-forme digitale 100%  
immobilier neuf

### **COURTAGE CRÉDITS**

Exell Crédit immobiliers  
Assurances emprunteurs

### **GESTION LOCATIVE**

GTF, plus de 7 000 lots gérés à  
Paris

140 collaborateurs

1200 signatures par an

1000 immeubles par an

2.5 milliards d'actifs gérés